

---

East Boldre  
Community SpeedWatch  
Local Road Safety Information

---

# 1 People

The map below shows the number of reported road traffic accidents in 20 years from 2001 – 2020 in and around E Boldre parish = 189.

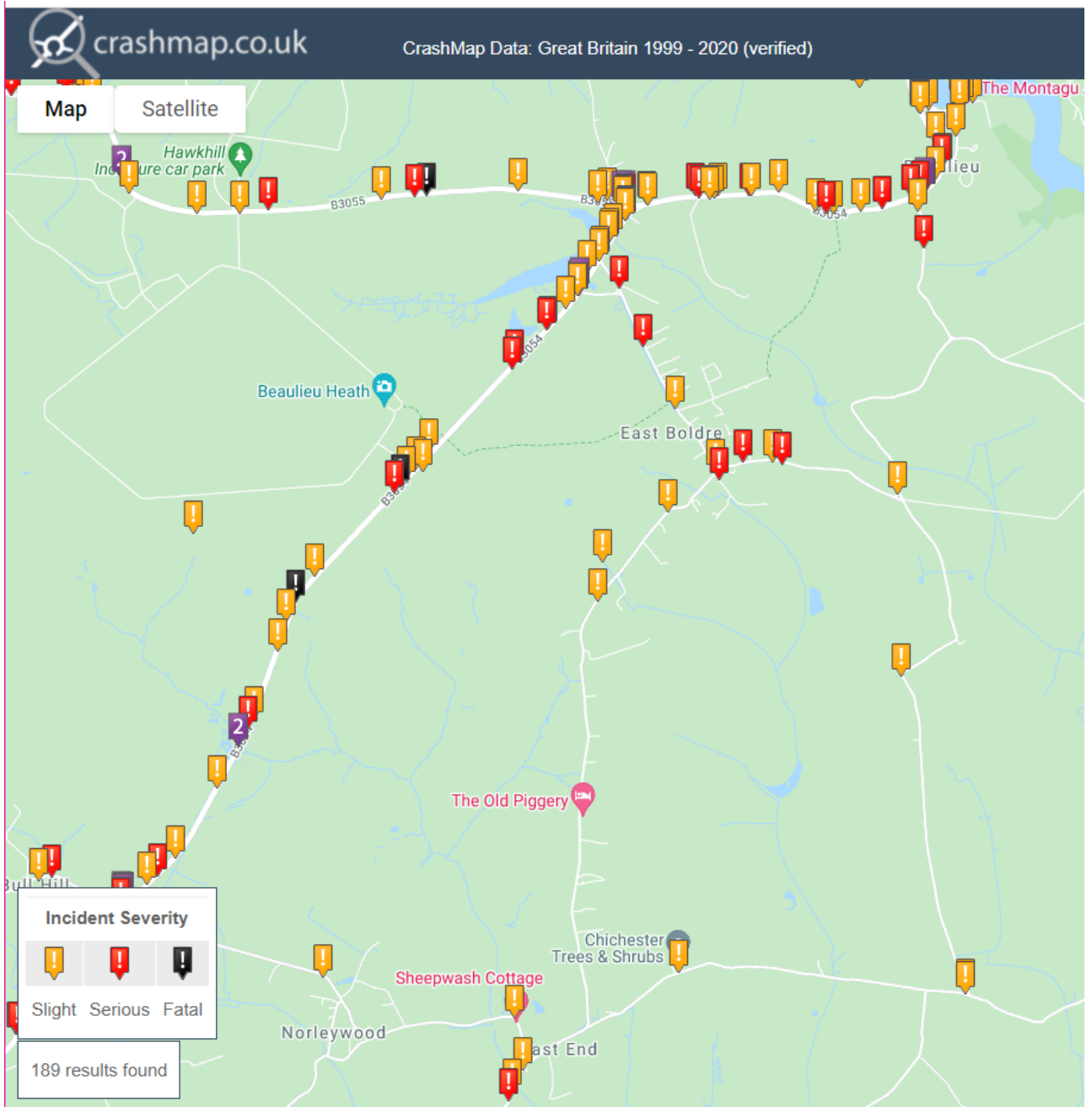
Source: CrashMap

### Casualties

- 45 cyclists
- 21 motorbikes
- 10 children
- 8 pedestrians

### Vehicles involved

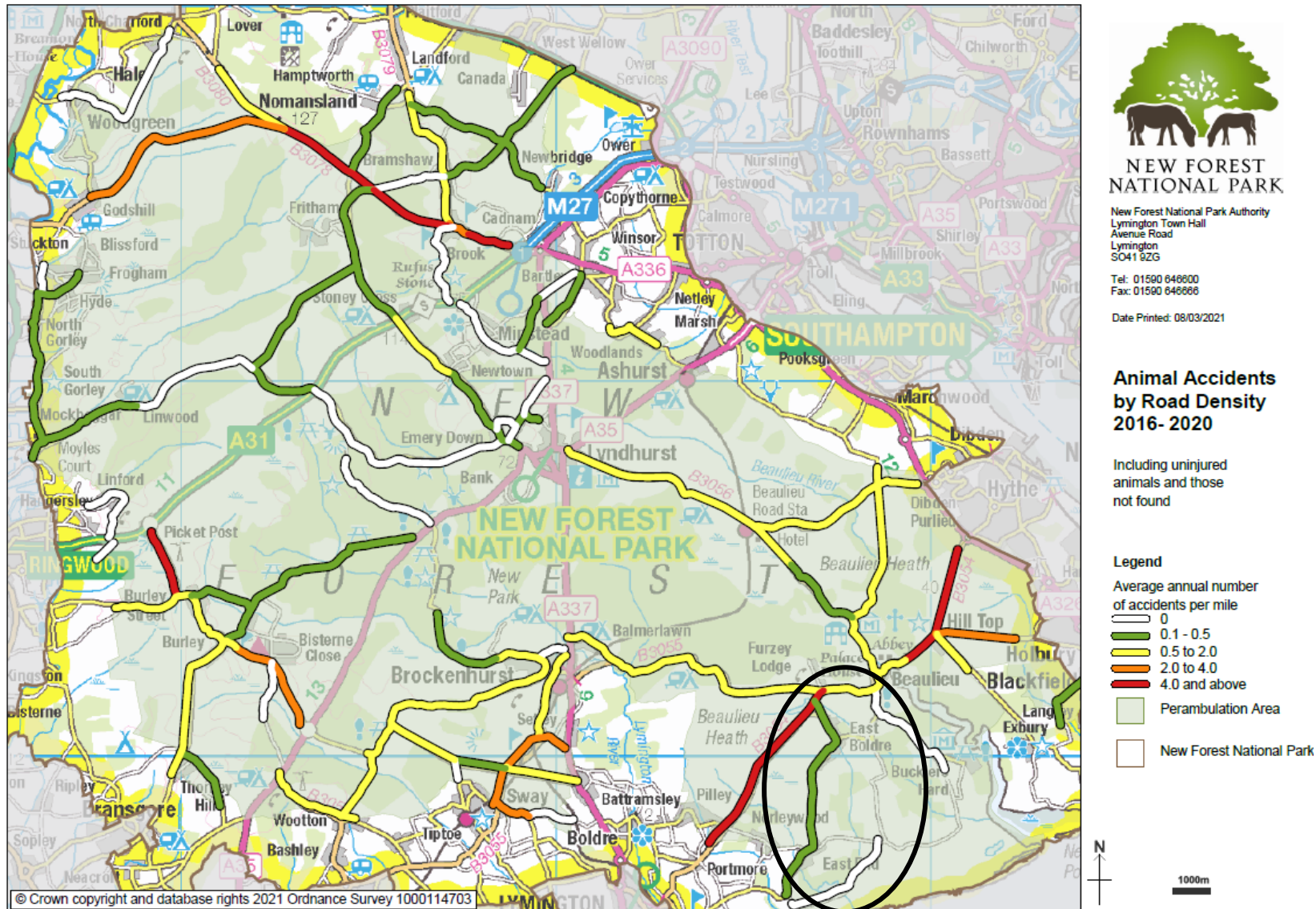
- 143 cars
- 60 Young drivers
- 45 pedal cycles
- 29 motorbikes
- 28 Goods vehicles

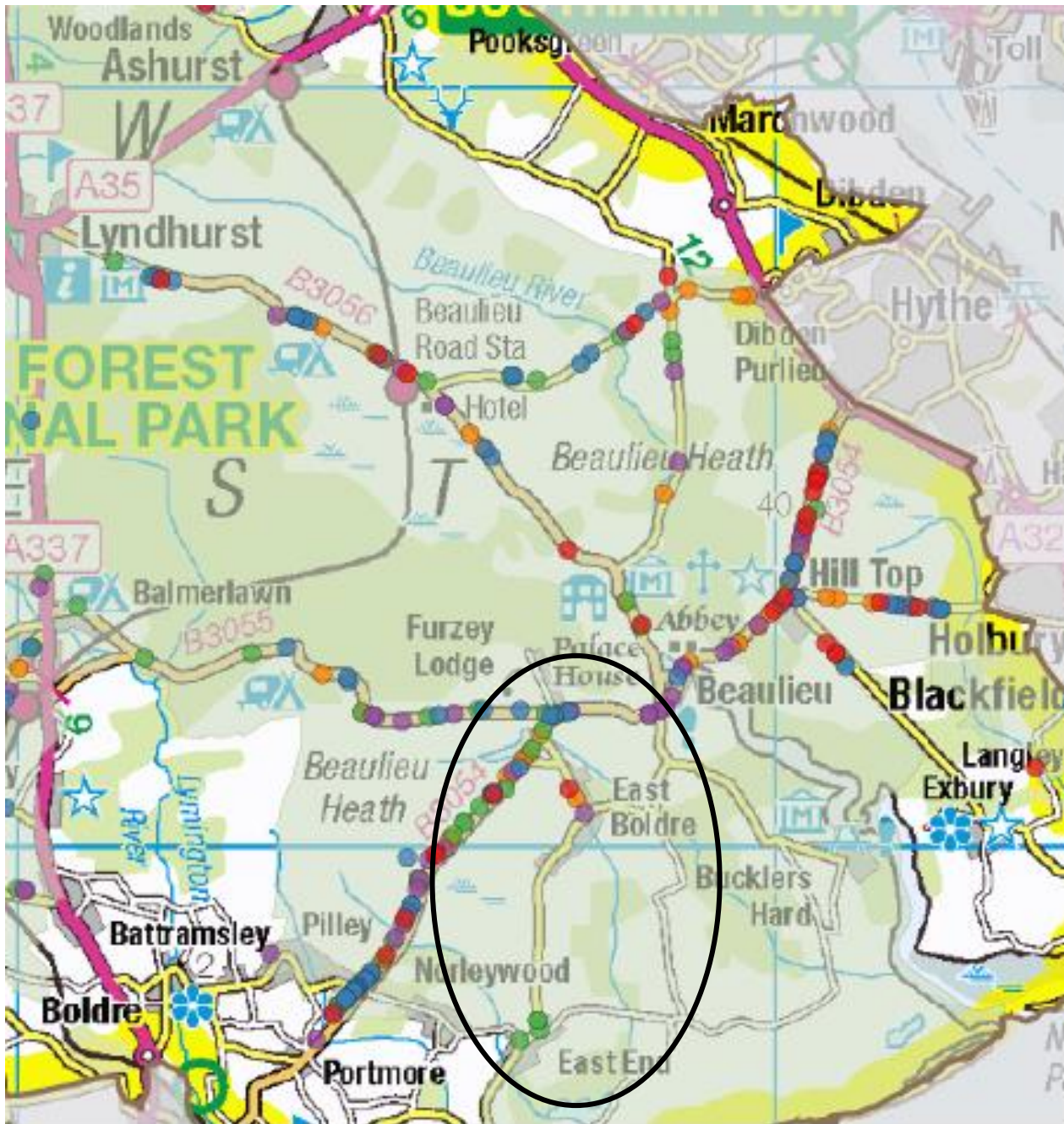


## 2 Animals

### 2.1 Accident Density – 2016 - 2020

The black ellipse (bottom right) outlines the approximate area of East Boldre's SpeedWatch activities. The B3054 is clearly the most significant stretch of road for animal accidents (similar level to the notorious Roger Penny Way in the North of the forest)) with the road from Beaulieu to Brockenhurst the next most significant road locally.





## Animal Accidents 2016 - 2020

Including uninjured animals and those not found

### Legend

#### Animal Accidents

- 2016
- 2017
- 2018
- 2019
- 2020

▭ Perambulation Area

▭ New Forest National Park



1000m

The number on animals depastured on the forest has nearly tripled over the last 30 years.

Animal road safety has improved (1 in 40 depastured animals killed in 1990) but is still significant with about 1 in 310 animals out on the forest being killed in 2020 with a further 1 in 750 being injured.

